



## ABIM 2020: Prices for booths

**Date** Monday, 19 October - Wednesday, 21 October 2020

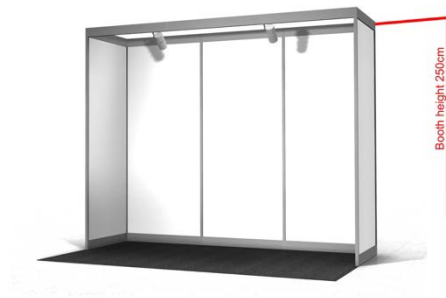
**Location** Hall 4.1, Congress Center Basel, Switzerland

Mini booth	Swiss francs
<input type="checkbox"/> 4 m <sup>2</sup> (2 m x 2 m) incl. one single conference pass, one wall, one table, two chairs	1250.00
<b>Booth</b> (no furniture is included) Incl. a single conference pass, electricity, light, carpet, <b>but not any furniture.</b> You may bring your own furniture or order everything you need at the shop of the Congress Center Basel.	<b>Swiss francs</b>
<input type="checkbox"/> 6 m <sup>2</sup> (3 m x 2 m)	1850.00
<input type="checkbox"/> 9 m <sup>2</sup> (3 m x 3 m)	2350.00
<input type="checkbox"/> 12 m <sup>2</sup> (3 m x 4 m)	3000.00
<input type="checkbox"/> 18 m <sup>2</sup> (3 m x 6 m)	4250.00
<input type="checkbox"/> 21 m <sup>2</sup> (shape see map)	4850.00
Guest pass - for exhibitors only	Swiss francs
Passes are issued to the company. Lost or unreturned passes cannot be replaced. Max. 2 passes per company	150.00
Limited special offer for exhibitors	Swiss francs
Advertisement in New Ag International ¼ page full colour	600.00
Poster to be displayed at the poster exhibition	Swiss francs
Poster (size A0, 841x1189 mm)	75.00



## Example layouts of booth shell schemes

The below images are for illustration purposes only. A partial shell scheme will be provided for all exhibition booths with full walls to the rear.



6 m<sup>2</sup> (3 m wide x 2 m deep)



18 m<sup>2</sup> (6 m wide x 3 m deep)



9 m<sup>2</sup> (3 m wide x 3 m deep)



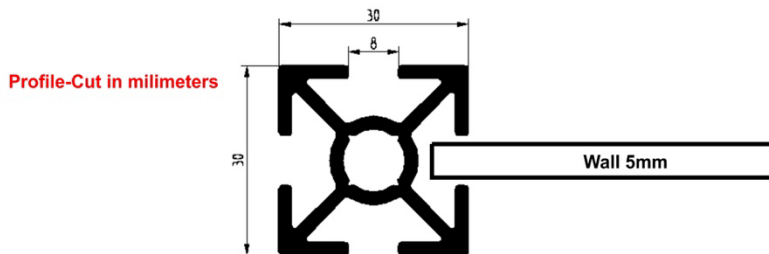
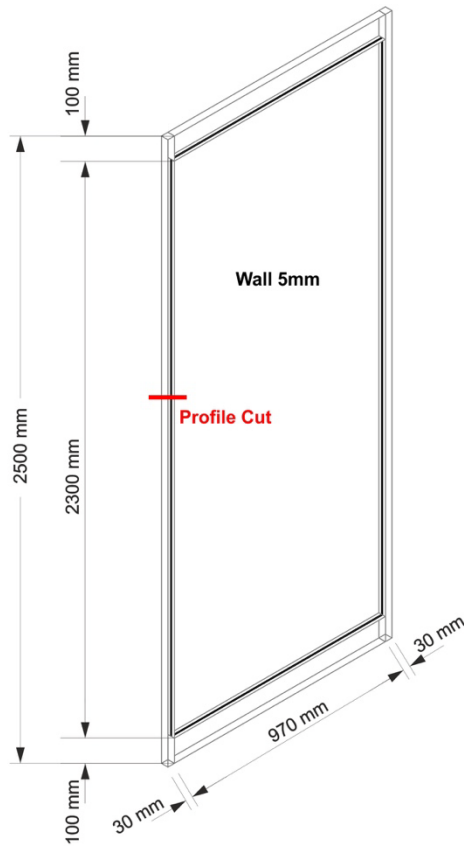
Mini booth 4 m<sup>2</sup> (2 m wide x 2 m deep)



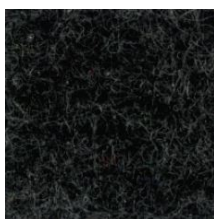
Example with furniture. Please note that no furniture is included. Please order furniture in the shop. Ask for the link from the congress secretariat.



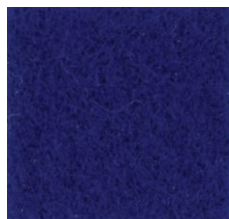
Technical view



Available carpet colour options



Dark Grey



Blue



Red



Green



## Organisers address and contact details

### **Forschungsinstitut für biologischen Landbau FiBL**

Research Institute of Organic Agriculture

Ackerstrasse 113

Box 219

5070 Frick

Switzerland

Phone +41 (0)62 865 72 04

Internet: [www.fibl.org](http://www.fibl.org)

### **International Biocontrol Manufacturers Association (IBMA)**

Rue de Trèves 61

1040 Brussels

Belgium

Phone +32 (0)2 231 18 42

Internet: [www.ibma-global.org](http://www.ibma-global.org)

Frick, 8 March 2020