

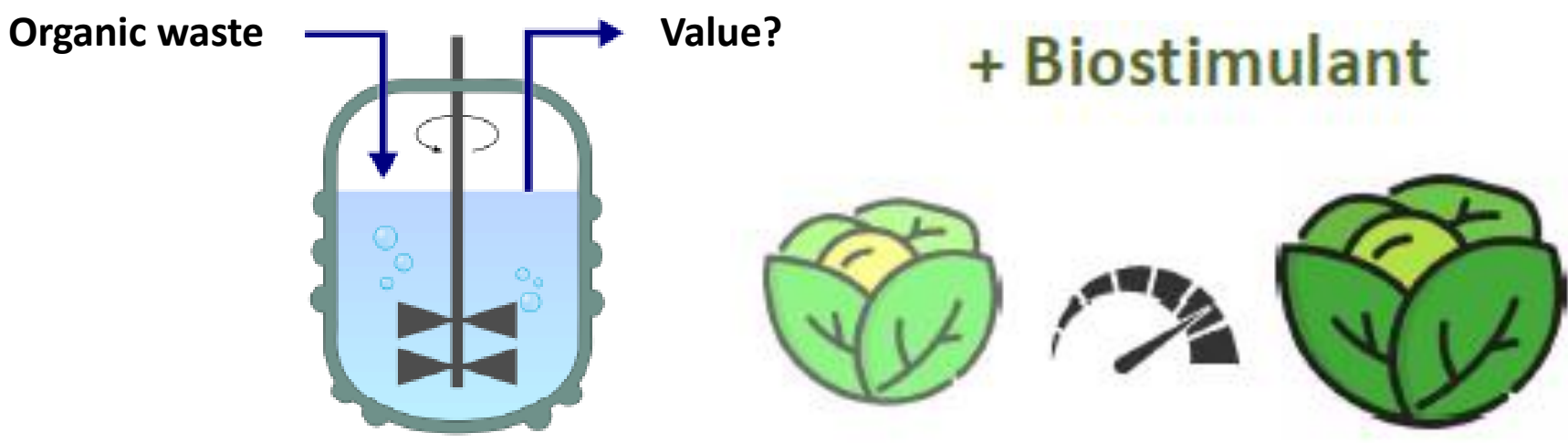
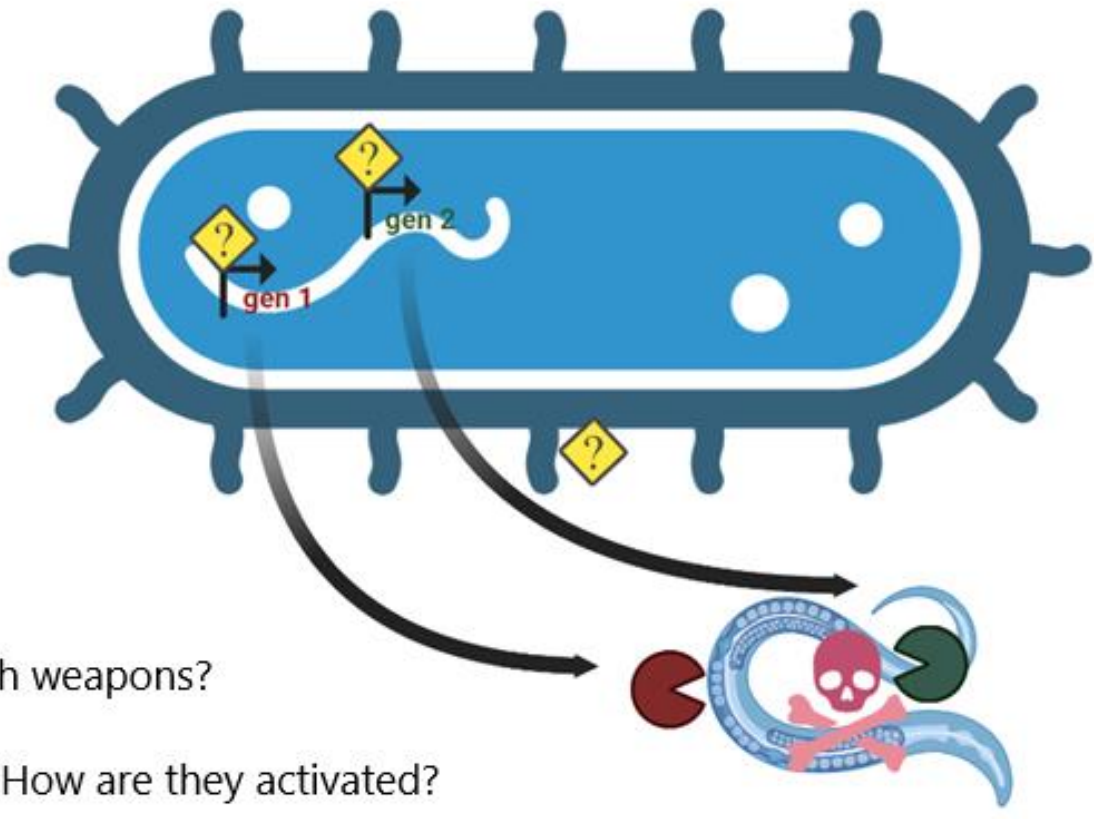
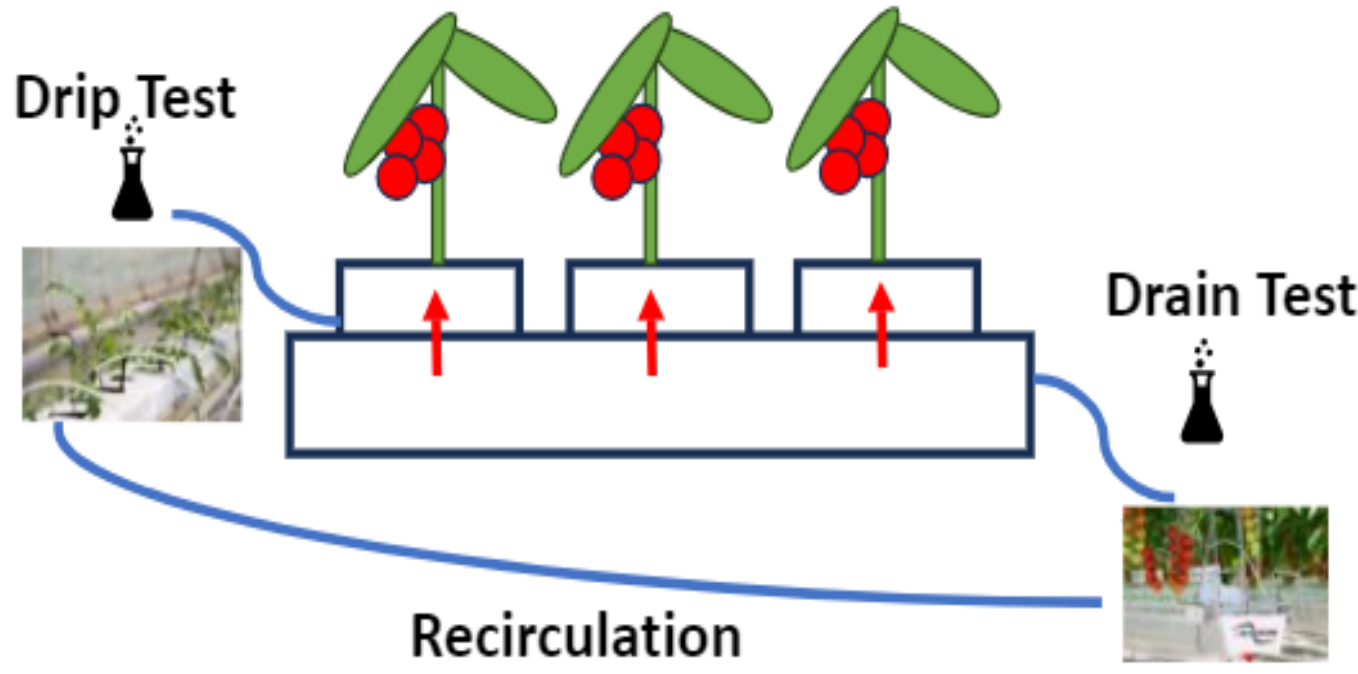


Find us at:
SCFF.nl
Distributieweg 1
2645 EG
Delfgauw
The Netherlands

SCAN ME

- Your Questions -

- What are the optimum cultivation conditions for my crop?
- How do I maximize nutrient uptake?
- How do I safely use recirculated water?
- Can I use pheromones to attract natural antagonists?
- What are the new macroorganisms to be used as Biocontrol Agents?
- What tests should I perform to get regulatory approval for my product?
- How can I use microbes to boost plant resistance against pests?
- How do I confirm my biopesticide or biostimulant is entirely plant-based?
- Can I turn my organic waste into valuable biostimulants?
- How do I test the efficacy of my biological product?
- Which microbes are present in my product and is it microbially stable?



- Our toolbox -

Advanced Plant physiology Sensors



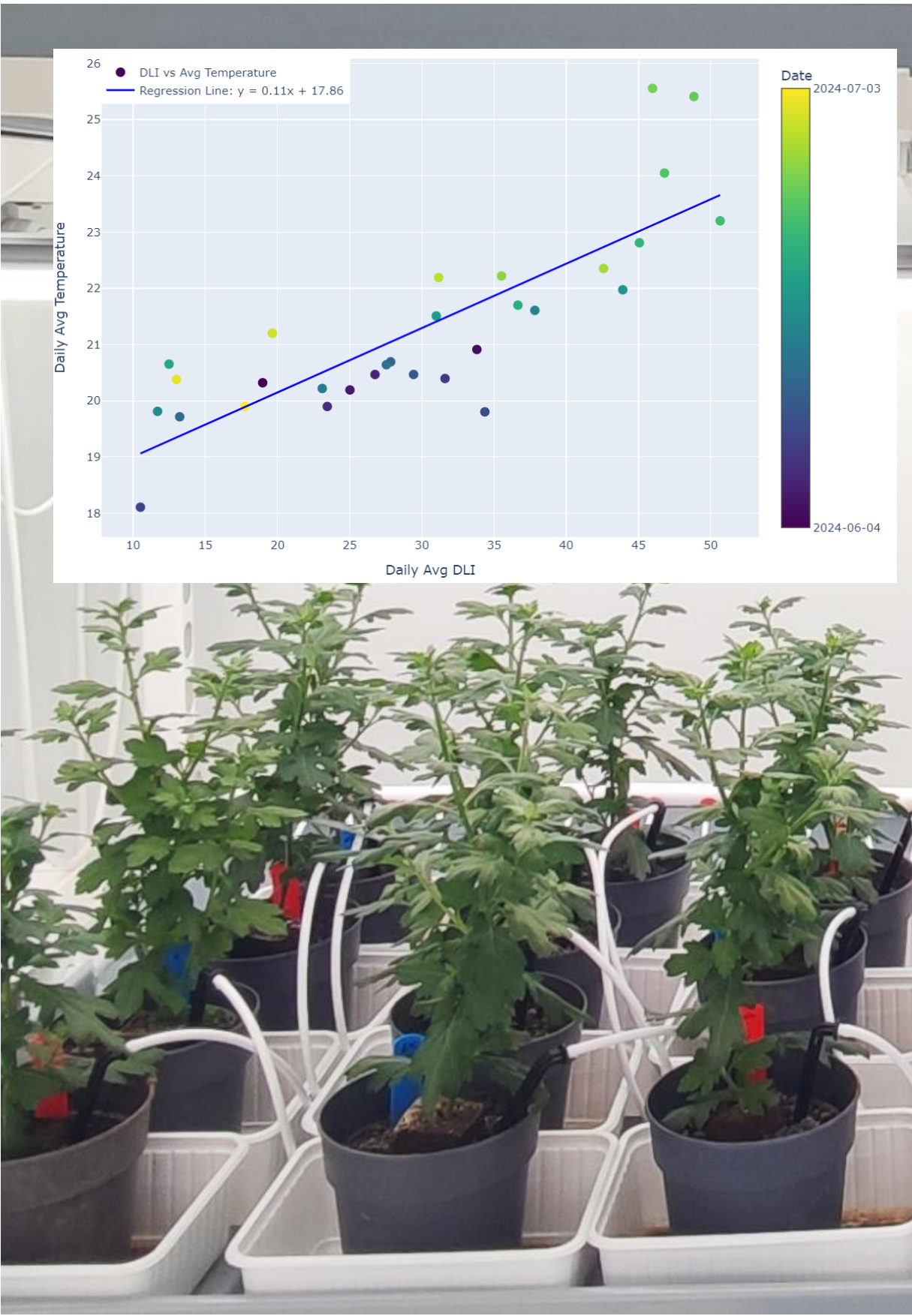
Greenhouses certified for quarantine organisms



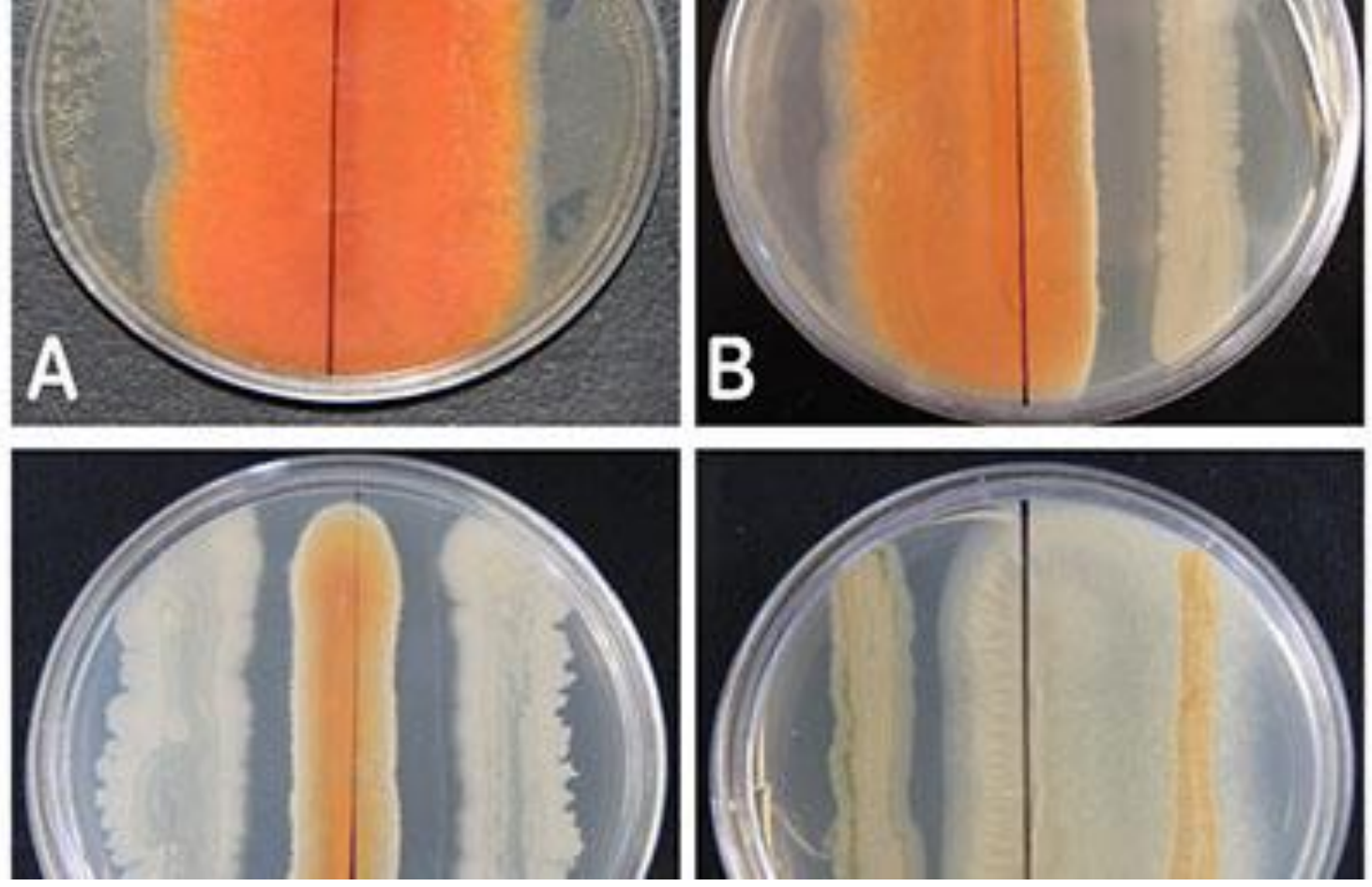
Fermentors and (Photo)bioreactors



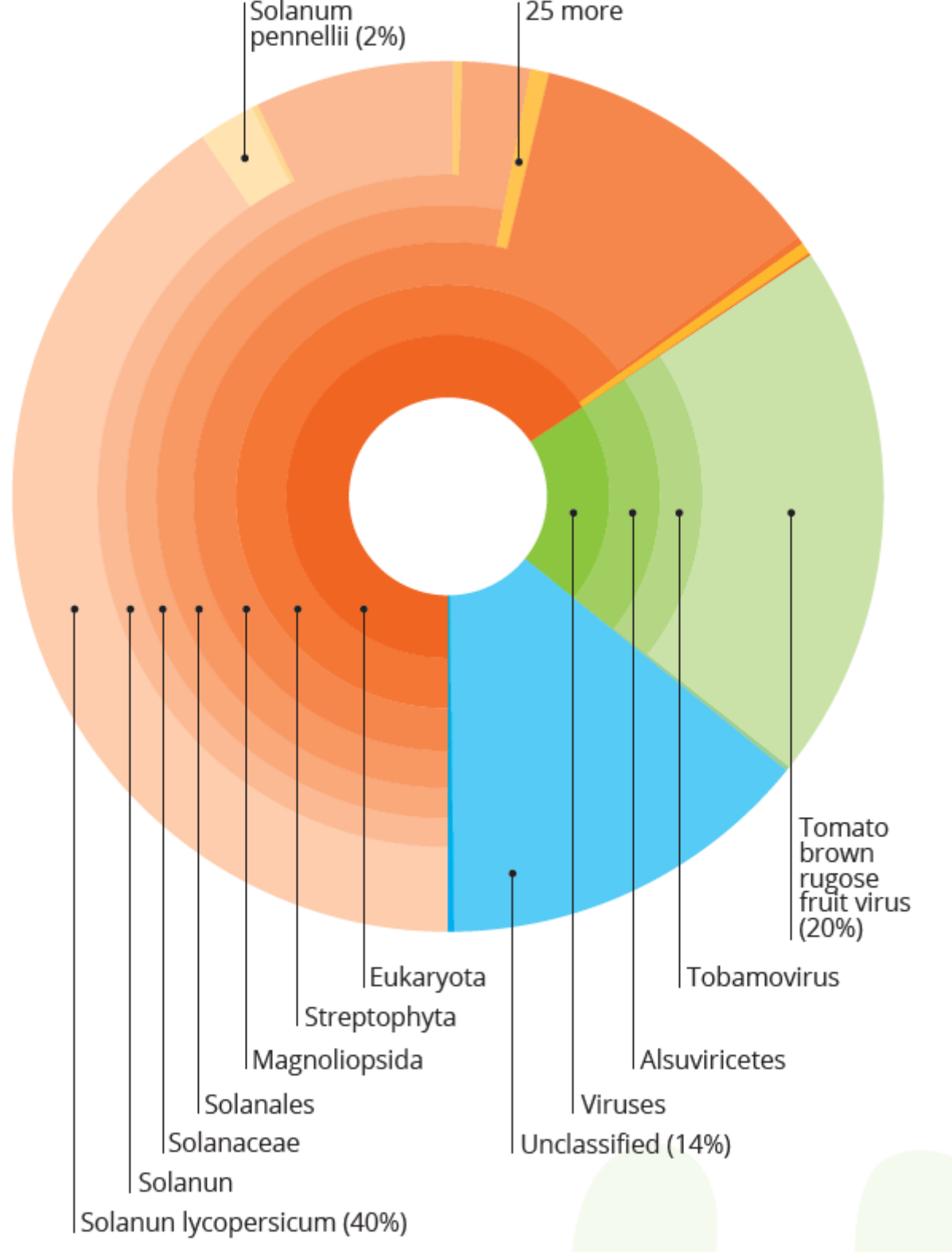
Climate Chambers for growth optimization



ML-I lab for work with GMOs



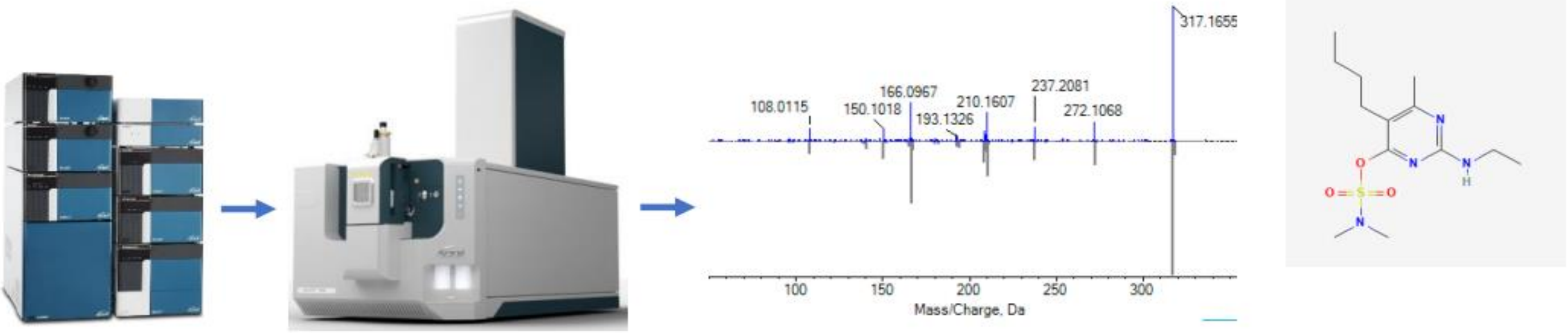
NGS sequencing and Metagenome analysis



Scouting and testing new biocontrol agents



MS-based metabolomics/Small molecule Identification and Quantification



- Our team -



Adriaan Vermunt
adriaan.vermunt@scff.nl

Our Plant Pathology group develops and tests biologicals and chemicals against plant pathogens.

We have licenses for Good Experimental Practice (GEP)-trials and to work with quarantine-organisms.

Our genomics core has developed a sequencing pipeline to identify micro-organisms in complex mixtures and a metagenomics strategy to reveal their functions.

Joop Woelke
joop.woelke@scff.nl

Our Entomology group specializes in developing and testing innovative biocontrol agents to sustainably reduce pest populations. We develop new techniques such as pheromone traps to enhance agricultural productivity while protecting ecosystems.

We are committed to finding eco-friendly solutions to advance biological pest management.

Faezeh Nami
faezeh.nami@scff.nl

Our Analytical chemistry core has expertise in advanced analytical techniques such as LC-QTOF-MS for non-targeted analysis and chemical fingerprinting of (waste)water, plant-related samples, and agricultural products such as biopesticides and biostimulants. This method offers detailed molecular profiles, identifying active ingredients, impurities, and degradation products with high precision, ensuring product quality and regulatory compliance.

Ruud Kaarsemaker
ruud.kaarsemaker@scff.nl

Our Plant physiology group uses nutrient and water samples, climate data and advanced sensors to monitor plants in a closed growth system. This provides a strong toolkit to develop strategies for optimal growth conditions including light, temperature and nutrient supply. In addition we can determine how this could be adapted to maximize the beneficial effects of a biostimulant

Carina Eisfeld
carina.eisfeld@scff.nl

Our Microbial Ecology group focuses on enhancing plant health through fostering a diverse and balanced soil microbial ecosystem. By promoting beneficial microorganisms to boost soil quality and plant resilience we can also address issues related to viruses, bacteria, fungi, and nematodes. We have In-depth knowledge of water quality management, to ensure safe (microbially and chemically) irrigation water for sustainable agriculture.

Sacha Stelder
sacha.stelder@biotechmicrobials.nl

At Biotech Microbials we use applied microbiology to help companies research and find biotechnological solutions to their problems. These range from using fermentative enrichment of (agricultural) waste streams to contribute to a circular economy, to constructing genetically encoded biosensors to quickly determine biostimulant potential. With an arsenal of high-end analytical methods we can help you go from concept to market.

We have access to the extensive facilities of Normec Groen Agro Control. Normec Groen Agro Control helps companies in the agribusiness and food industry gain insight into the quality of raw materials, products and processes. Only then can you deliver a high-quality product to your customer in the chain. Normec Groen Agro Control offers insight, solutions and provides services in the field of sampling, laboratory analyses and customized advice for you. Find them at: normecgroenagrocontrol.com